



GENESIS PROTECTION PROGRAM

MULTI-FACTOR AUTHENTICATION (MFA)

SMS AUTHENTICATION METHOD
INSTALLATION GUIDE



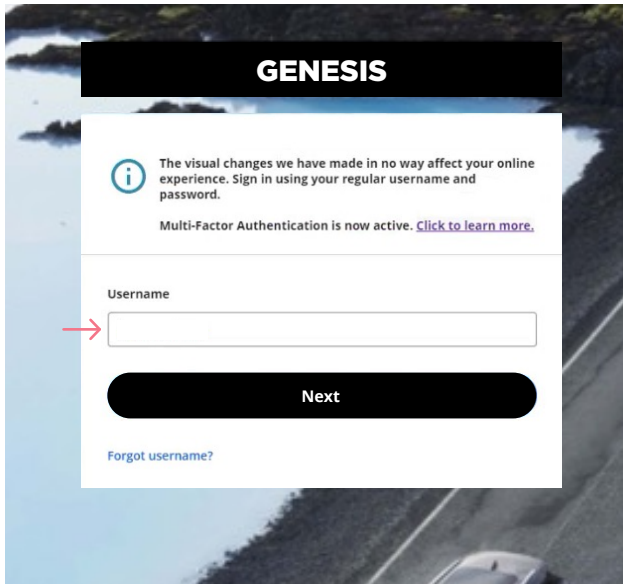
SMS AUTHENTICATION METHOD

When you first log into UniFI or UniFI 2.0, you will be prompted to set up multi-factor authentication (MFA).

SET-UP TAKES JUST A FEW MINUTES

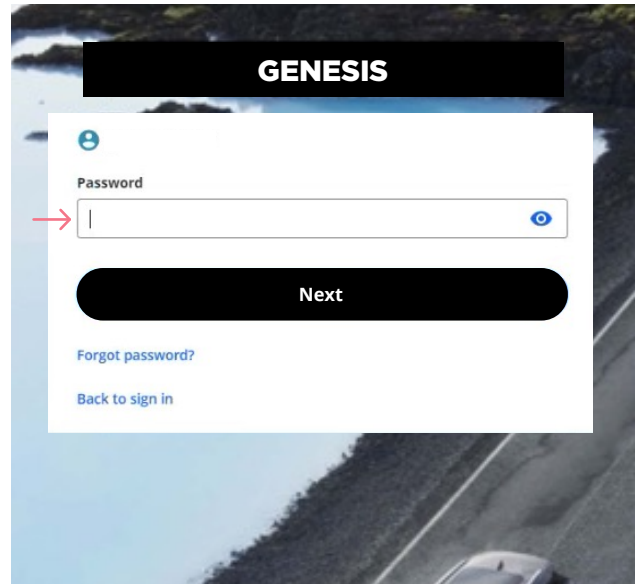
Step 1

When you click on the UniFI or UniFI 2.0 link, you will be redirected to the portal webpage, where you will be asked to enter your **Username***.



Step 2

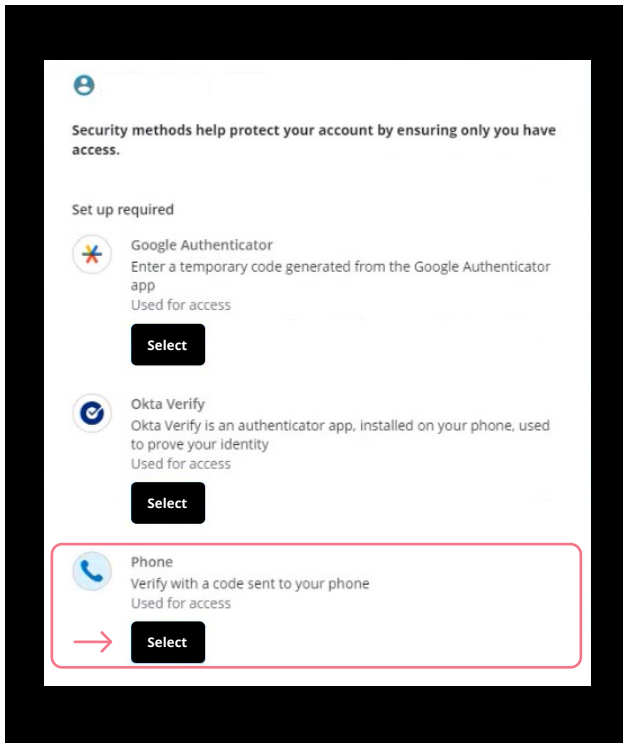
Enter your **Password***.



* If you are accessing UniFI or UniFI 2.0 from your (OEM/SSO) Portal, you will not need to put in your username and password. Your step 1 will start at step 3.

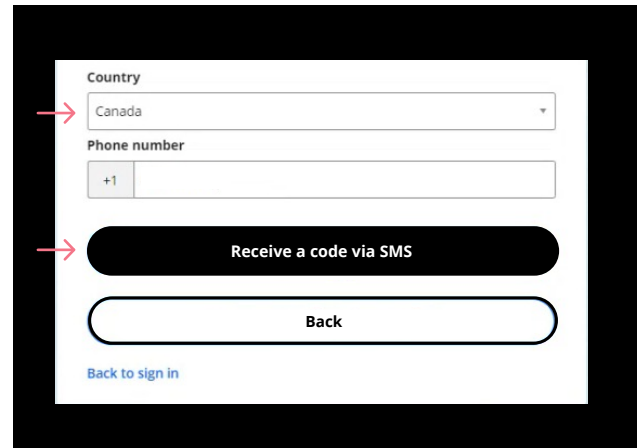
Step 3

Click on the **Select** button in the Phone Authentication section.



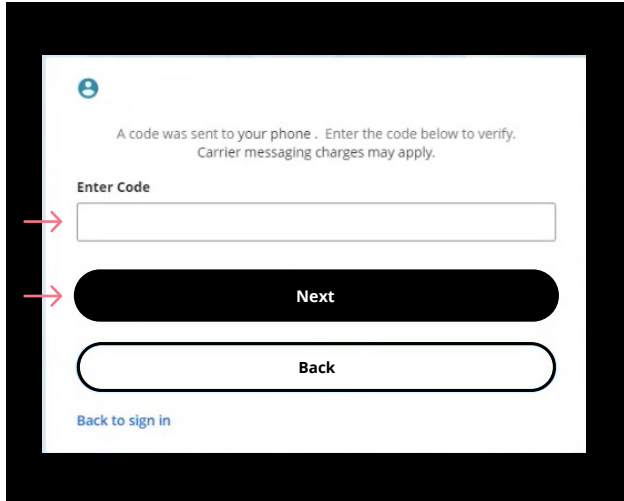
Step 4

Next you will be asked to select the **Country** and enter the **Phone number** where you wish to receive your security code. Then click on **Receive a code via SMS**.



Step 5

Once you have received the unique security code, you will need to **Enter the code** that is given to you and click **Next**.



A code was sent to your phone . Enter the code below to verify.
Carrier messaging charges may apply.

Enter Code

Next

Back

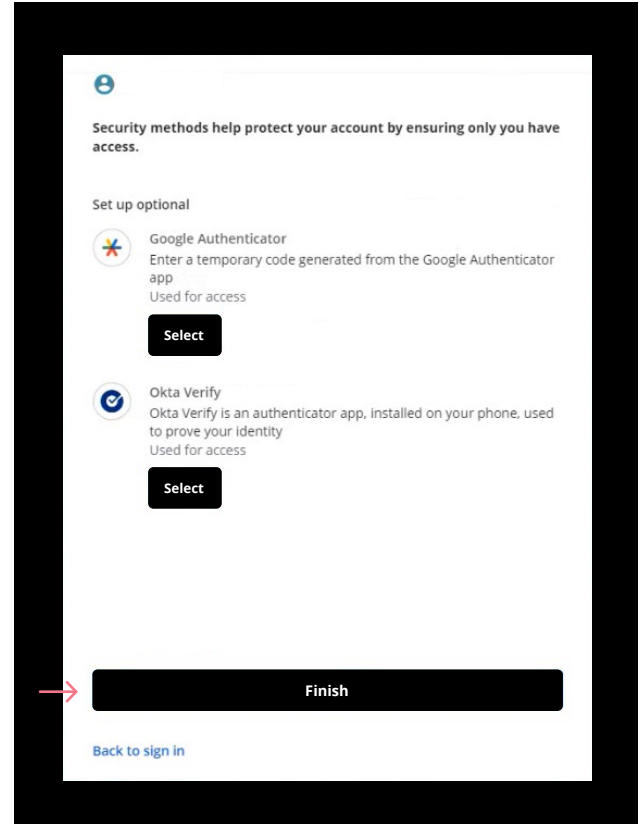
[Back to sign in](#)

Two red arrows point to the 'Enter Code' input field and the 'Next' button.

Step 6



You have now completed the SMS Authentication set-up and will be taken back to the configuration page.

You can choose to set up an additional MFA method; or click on **Finish** to continue to your UniFI or UniFI 2.0 Portal.



Security methods help protect your account by ensuring only you have access.

Set up optional

-  Google Authenticator
Enter a temporary code generated from the Google Authenticator app
Used for access
Select
-  Okta Verify
Okta Verify is an authenticator app, installed on your phone, used to prove your identity
Used for access
Select

Finish

[Back to sign in](#)

A red arrow points to the 'Finish' button.



Going forward, when you log into the UniFI or UniFI 2.0 Portal, you may be **prompted to provide a unique security code**, which will be sent through SMS (text message).